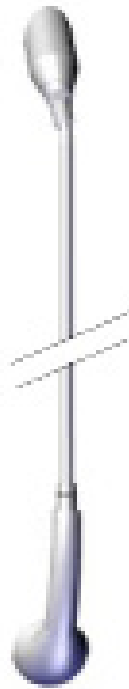


GalvinCare Anti-Ligature Wall Connector and Quick Disconnect Adaptor with Hand Held Shower

Specification Data Sheet



To Specify

Designed for assisted shower applications in behavioural health facilities, this unique shower connector allows carers the option of bathing the patient with a hand held shower. Once finished the carer can simply disconnect the adaptor and hand held shower leaving a safe bathroom environment once again.

Code #40707

GalvinCare Mental Health Hand Held Shower with Anti-Ligature Wall Connector and Quick Disconnect Adaptor.

Features Include

- Anti-Ligature designed hand held shower adaptor, allows easy removal of the hand shower after use.
- Durable chrome finish for easy cleaning and a homely look.
- Utilises a quick connect fitting for a safe and reliable shut off and easy attach and release.
- Is able to be adapted to existing hose and hand held showers.

Performance Standards & Approvals

- AS/NZS 3718 – WaterMark
- When supplied with the approved handpiece and hose – WELS 3 Star
- WRAS Approved Product



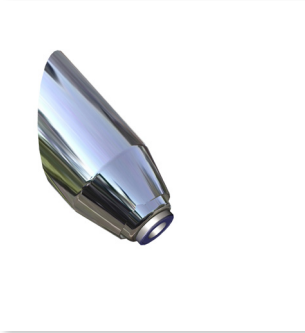
WaterMark
AS/NZS 3718 Lic. WMKA0034
SAI Global



A family
owned
Australian
business


galvinspecialised
commercial taps + valves

Operation



1. Push in the ring on the mounted connector.



2. Push in the hose and release the ring.

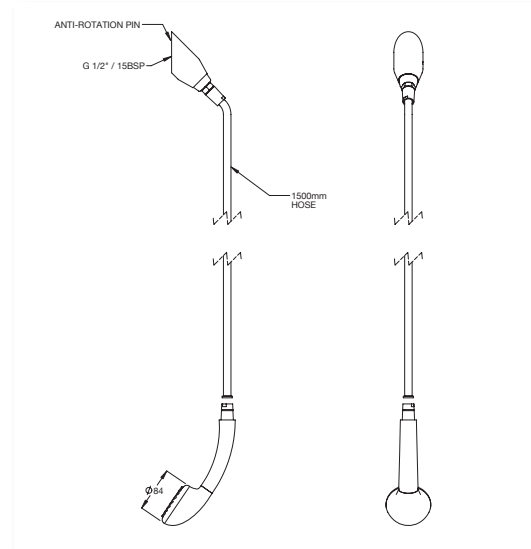


3. The ring will "pop" out once the hose has been pushed fully home into the mounted connector. The shower is now ready to use



4. To release the hose, push the ring in and the hose will come out.

Typical Dimensions



Maintenance & Cleaning

Galvin Specialised products should be cleaned with a soft damp cloth using only mild liquid detergent or soap and water. Do not use cleaning agents containing a corrosive acid, scouring agent or solvents. Do not use cream cleaners, as they are abrasive. Use of unsuitable cleaning agents may damage the surface. Any damage caused in this way will not be covered by warranty.

Regular maintenance should be carried out in accordance with the installation and troubleshooting guides provided with the product, relevant Australian Standards, local authorities and state codes.

Warranty

Galvin Specialised products are covered under our Manufacturer's Warranty at www.galvinengineering.com.au. Galvin Specialised products must be installed in accordance with the installation instructions and in accordance with AS3500 and the PCA, relevant Australian Standards and local authorities applicable to product being installed. Water and electrical supply conditions must also comply to the applicable national and/or state standards, failing to comply with these provisions may void the product warranty and affect performance of the product

Whilst all reasonable care has been taken in compiling the information in this document, the designs, dimensions and products shown are indicative only and should not be relied upon without our prior approval. Due to our policy of continuous development, we reserve the right to alter any details of specifications or products without notice. All information, drawings, technical specifications and product designs remains the property of Galvin Engineering Pty Ltd.

410 Victoria Rd, Malaga, WA 6090

Within Australia: **1300 514 074** Outside Australia: P: +61 (0)8 9249 5900

F: +61 (0)8 9249 5916

sales@galvinengineering.com.au

www.galvinengineering.com.au

ABN: 78 008 719 382

PERTH | SYDNEY | MELBOURNE | BRISBANE | ADELAIDE

A business unit of

GalvinEngineering 
the mark of reliability